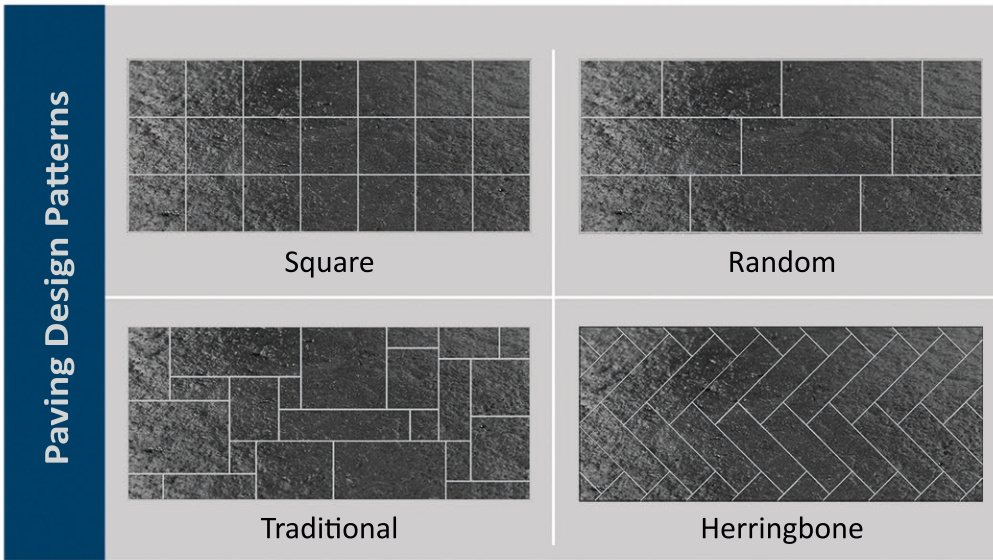





Sourced and manufactured from our own quarries in Caithness, this paving's versatility and natural durability ensures it lasts for years to come and is produced to ensure the paving fits the needs of the project and complements its surroundings.



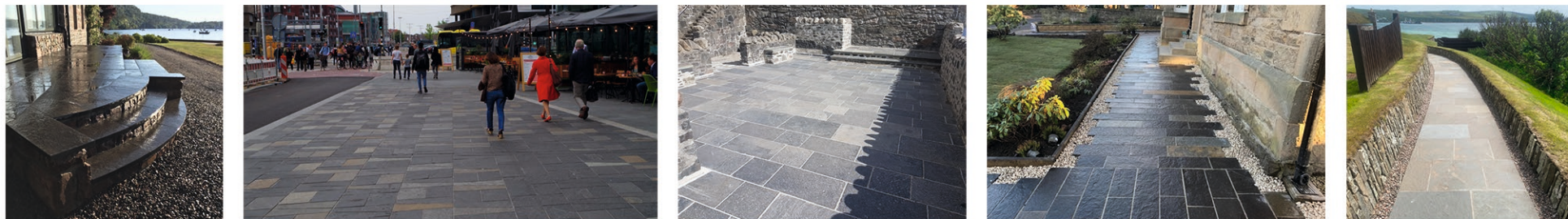
**Example Paving Sizes & Uses**

Paving Size (mm)	Thickness (mm)	Typical Use (BSEN 1341:2012)	Recommended Users
600 x 900	30	Pedestrian and cycle areas (Class 2)	
600 x 900	50	Pedestrian areas, occasional use by delivery and emergency vehicles (Class 4)	
600 x 900	70	Roads and streets, petrol stations (Class 6)	



## Usage

Caithness flagstone paving is intended to be used by the pedestrian and vehicular traffic of which it has been designed for. Any abnormal traffic may result in damages to the paving.



## Routine Maintenance

Whilst every effort has been made to ensure that your Caithness flagstone paving is of the highest quality, it will look better and last longer if a few simple maintenance procedures are adopted.

Avoid excessive amounts of soil being left on the paving surfaces as this can result in weed growth and cause porosity damage. If this occurs, use a stiff broom to sweep the surface clean and hose down with clean water.

To reduce the likelihood of algae, it is recommended that paved areas are laid to direct surface water into available drainage channels. Areas that are laid flat may retain some moisture and stimulate algae growth. Regular traffic will often disperse this however low traffic areas may require additional cleaning practises in their routine maintenance.

Paving surfaces can be washed using pressure washer equipment to remove dirt, weeds, algae etc. providing care is taken not to use excessive pressure. For more extensive washing, contact a specialist cleaning contractor.

## Efflorescence

Efflorescence can occur with natural stone products when salt from cement based bedding rises up through the paving and onto the surface. This is a temporary issue that usually lasts no longer than 12-18 months and will dissipate through use and natural weathering.

The information contained herein is to the best of our knowledge true and accurate and is given in good faith but without warranty. As part of our continual improvement process, Norse Stone Ltd reserve the right to change the properties listed on this data sheet without any prior notice.

## Technical Data

Summary of Typical Values

Petrography	Calcareous Siltstone	EN 12407:2007	Flexural Strength	35Mpa	BSEN 12372: 2006
Density	2650 (kg/m <sup>3</sup> )	BSEN 1936: 2006	Flexural Strength <sub>(freeze thaw)</sub>	32.7Mpa	BSEN 12372: 2006
Porosity	0.40%	BSEN 1936: 2006	Compressive Strength	209Mpa	BSEN 1926: 2006
Slip Resistance	96.0 (dry)	BSEN 14231: 2003	Abrasion Resistance	22.5mm	BSEN 14157: 2004
	69.0 (wet)	BSEN 14231: 2003	Water Absorption	0.20%	BSEN 13755: 2008